



8 Maywood Close

Kenton



SANDERSON
YOUNG



8 Maywood Close
Kenton

Lovely Semi-Detached Family Home with Open Plan Lounge/Diner, Kitchen/Breakfast Room, Three Bedrooms, Family Bathroom with Four Piece Suite, Off Street Parking with Garage and Beautiful South Facing Lawned Rear Gardens.

This great, semi-detached family home is ideally located at Maywood Close, Kenton.

Maywood Close, which is quiet cul-de-sac, is tucked just off from Kenton Lane and is placed close to local schooling, great road transport links into Newcastle City Centre and also the A1 offering excellent links throughout the region.

Price Guide:
Offers Over £265,000

3 2 1 C





The internal accommodation comprises : Hallway with stairs leading to the first floor | Open plan lounge diner with walk-in bay window to the living area and sliding doors leading to the rear terrace and gardens from the dining space | Extended kitchen/breakfast room with integrated appliances, range cooker, tiled flooring and French doors leading to the rear terrace and gardens.

The stairs then lead to the first floor and give access to three bedrooms | Bedrooms one and two are both comfortable doubles and bedroom three is a smaller single room | Family bathroom with four piece suite including free standing bathtub.

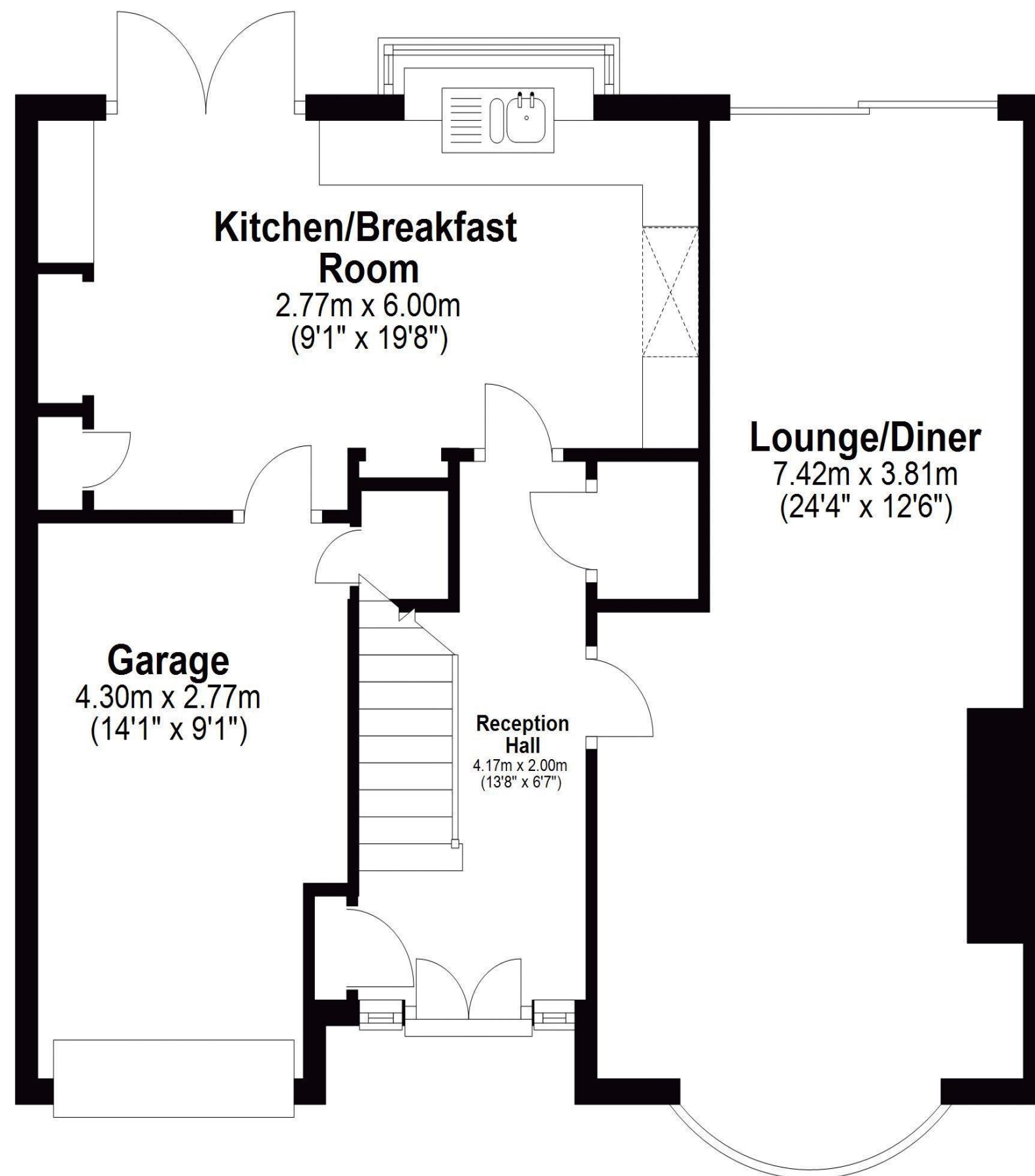


Debbie Brown
0191 213 0033
Debbie.brown@sandersonyoung.co.uk



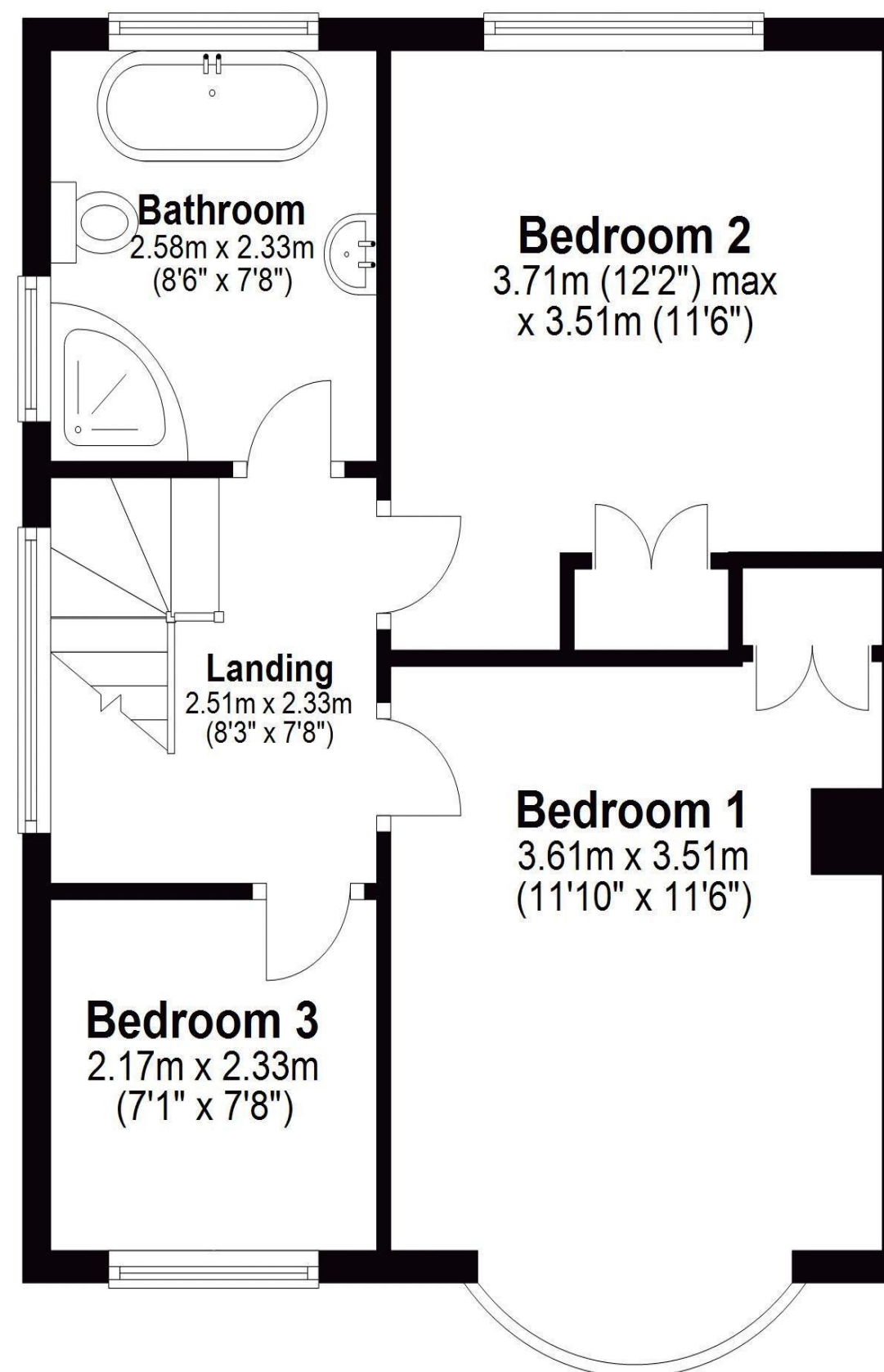
Ground Floor

Approx. 62.6 sq. metres (674.0 sq. feet)



First Floor

Approx. 44.5 sq. metres (479.4 sq. feet)



Externally, the property enjoys a block paved driveway to the front with access to the garage and walled boundaries. To the rear, is a lovely, enclosed south facing garden with large decked entertaining area, lawned garden, fenced boundaries and a raised seating area to the rear.

Well-presented throughout with double glazed windows and gas 'Combi' central heating early viewings are strongly advised.

Services | Mains: Electricity, Gas, Water, Drainage |
Tenure: Freehold | Council Tax: Band C | EPC Rating: C

Total area: approx. 107.2 sq. metres (1153.4 sq. feet)

8 Maywood Close, Newcastle Upon Tyne

8 Maywood Close

Kenton

